

39-96

96

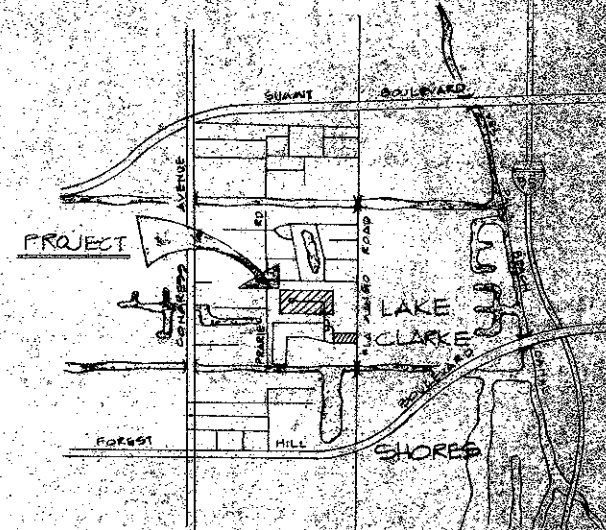
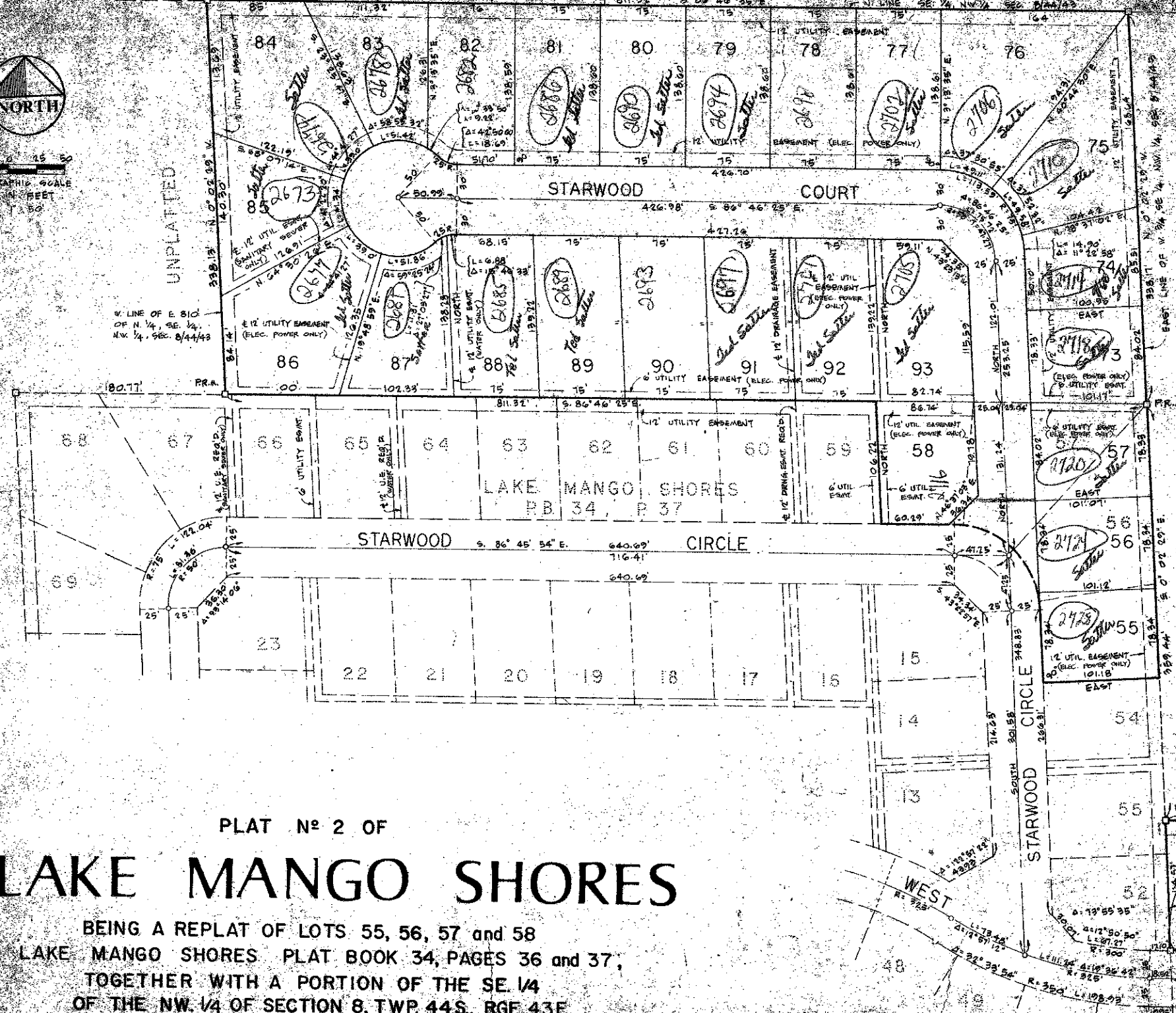
THIS INSTRUMENT PREPARED BY
WILLIAM A. CURTIS
2885 ANCHORAGE TOLLWAY
WEST PALM BEACH, FLORIDA
DRAWN BY ALLAN STREY



GRAPHIC SCALE
IN FEET
0 15 30

UNPLATTED

UNPLATTED



LOCATION MAP

1000-058 RS zone
75 19
map #4

PLAT NO 2 OF LAKE MANGO SHORES

BEING A REPLAT OF LOTS 55, 56, 57 and 58
LAKE MANGO SHORES PLAT BOOK 34, PAGES 36 and 37,
TOGETHER WITH A PORTION OF THE SE 1/4
OF THE NW 1/4 OF SECTION 8, TWP 44S., RGE 43E.
PALM BEACH COUNTY, FLORIDA
SHEET 2 OF 2 — JANUARY 1979

LAKE MANGO SHORES
JAMES D. CARLTON, INC.

CONSULTING ENGINEERS AND LAND SURVEYORS
1120 W. OCEAN BOULEVARD, WEST PALM BEACH, FLORIDA 33411